



Acme Sanitary Ware Co. Ltd.

1/F, Acme Building, 22-28 Nanking Street, Kowloon, Hong Kong

Tel: 2388 7171 Fax: 2710 8012



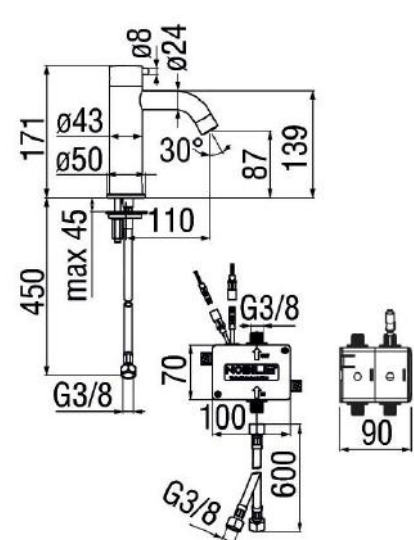
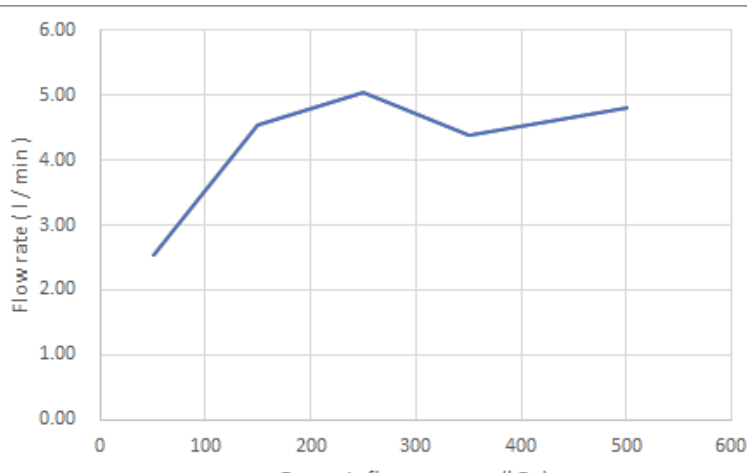
Email: acme@acmesanitary.com.hk

Website: www.acmesanitary.com.hk

NOBILIS®
RUBINETTERIE

PROJECT		REF		REV	ITEM CODE	
LOCATION		DATE			PAGE	

SANITARY WARE SPECIFICATION SHEET

Item Descriptions	Nobili (Italy) Chrome plated deck mounted sensor mixer with infrared control in DC Supply; nominated flow rate 4.7 L/min in WELS Grade 1 ; Registration No. TM 21-0107					Illustration/ Drawing												
Standard	QAVR (Italy) 																	
Dimensions	L110 x W50 x H171 mm																	
Model	IRLV00118/3CR																	
Finish	Chrome Plated																	
Manufacturer	Nobili (Italy)																	
Source	Acme Sanitary Ware Co. Ltd Mr. Eric Wong/ Mr. Don Yuen (852) 2388-7171 / (852) 2710-8012																	
Contact Tel/Fax	acme@acmesanitary.com.hk																	
E-mail	www.acmesanitary.com.hk																	
Website																		
<table><tr><td>Dynamic flow pressure (kPa)</td><td>50</td><td>150</td><td>250</td><td>350</td><td>500</td></tr><tr><td>Flow rate (l/min)</td><td>2.55</td><td>4.55</td><td>5.05</td><td>4.40</td><td>4.80</td></tr></table>						Dynamic flow pressure (kPa)	50	150	250	350	500	Flow rate (l/min)	2.55	4.55	5.05	4.40	4.80	<p>Product Descriptions</p> <ul style="list-style-type: none">• infrared control• Chrome• Anti limescale aerator M22x1• Battery power• Without waste• Ø 3/8" stainless steel flexible pipe
Dynamic flow pressure (kPa)	50	150	250	350	500													
Flow rate (l/min)	2.55	4.55	5.05	4.40	4.80													

Note:

* All information of the above is for the reference only. No prior notice is made if any changes.

註冊號碼 (Registration No.):

TM 21-0107



自願參與用水效益標籤計劃 - 水龍頭
Voluntary Water Efficiency Labelling Scheme - Water Taps



茲證明

This is to certify that

ACME Sanitary Ware Company Limited

將下列水龍頭在本計劃內註冊：
has registered the following water tap under this scheme :

牌子 / Brand	:	Nobili + Neoperl
型號 / Model	:	IRLV00118/3CR + 40.2051.000
種類 / Type	:	Mixing
原產地 / Country or Region Origin	:	Italy (Mixer) Germany (Flow Controller)

在用水效益標籤上展示的標誌

Symbolic Presentation on the Water Efficiency Label



滴水點

Water droplet(s)

用水效益級別

Water Efficiency Grade

: 1

耗水量

Water Consumption

: 4.7

公升/分鐘

litres/minute

簽發日期:

Date of Issue:

29 March 2021



水務署

Water Supplies Department



水務署署長(張業駒代行)
for Director of Water Supplies



水務署
Water Supplies Department

總部 Headquarters

灣仔告士打道七號入境事務大樓 48 樓

7 Gloucester Road, Wan Chai, Hong Kong



本署
Our ref.
來函檔號
Your ref.

321/2020 T/J(1574/2020)

電話 :
Tel.
傳真 : 2824 0578
Fax.

18 January 2021

Acme Sanitary Ware Co. Ltd.
1/F, Acme Building,
22-28 Nanking Street,
Kowloon, Hong Kong

(Attn.: Mr Perry CHOW)

Dear Sir,

**Approval of "NOBILI" Sensor Mixer
(General Acceptance No. C20210040)**

Your letters ref. L031/2020 and L039/2020 dated 27 November 2020 and 23 December 2020 respectively refer.

Having considered the test report ref. J25642A issued on 16 November 2020 by Nutek Systems (HK) Ltd. and WRAS certificate, this Authority accepts that the fitting described below complies with, and its use when correctly installed does not contravene, the Waterworks Ordinance and Regulations.

Name of Manufacturer: Carlo Nobili SpA Rubinetterie
Country of Origin: Italy
Brand: Nobili
Details of Fitting: 3/8" Deck mounted sensor mixer with 2 nos. of flexible hoses approved by UK's WRAS under ref. 2005316
Model: IRLV00118/3CR
Body Markings: **NOBILI**
Expiry Date: 31 May 2025



This Authority hereby permits the use of the above fitting in fresh water plumbing systems subject to full adherence to Waterworks installation requirements. In particular, you are required to draw your customers' attention to the following requirement-

"The cold water supply to the fitting shall be drawn from the same source that supplies the hot water apparatus so as to provide a balanced pressure and to obviate the risk of scalding in the event of a restriction or failure in the water supply."

"A stop cock or gate valve must be installed at the upstream of the fitting for manual isolation of water supply." AND

"The main voltage operated sensor valve should comply with the electricity safety regulation for applications in bathroom, toilet etc."

A condition of this acceptance is that the fitting to be installed shall be replicas of the sample as certified by the testing agent mentioned above and without modifications. This acceptance may be withdrawn at any time if the standard of the fitting installed fail to meet that of the approved sample or if the fitting is found to be unsuitable for use in fresh water plumbing systems.

This acceptance is only applicable to the main body of the fitting, unless otherwise specified.

For the use of the fitting in any project, the General Acceptance Number of this letter must be quoted as a means of identification of acceptance of the fitting by this Authority.

Should you have any enquiries, please contact our Engineer Mr. Terry KUNG at tel. no. 3583 4086.

Yours faithfully,



(CHAN Chung-kun)

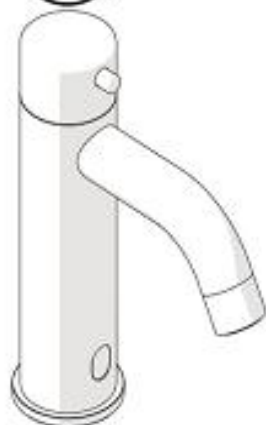
for Director of Water Supplies

Encl.

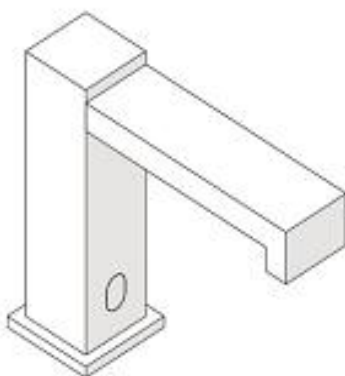
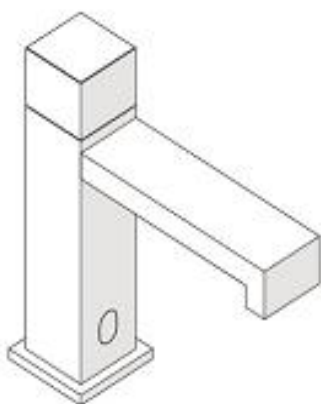
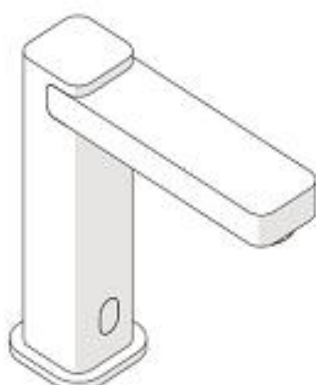
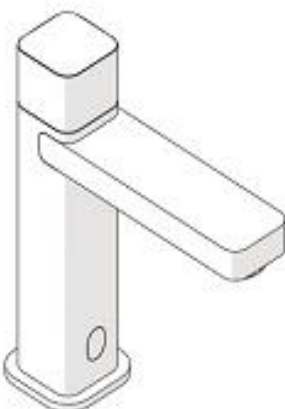
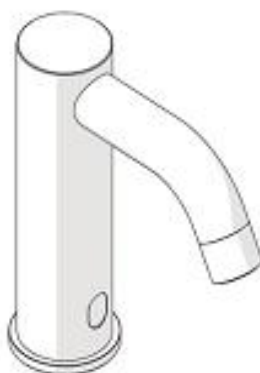
c.c. WSD 3321/1/82] - without catalogue
 ME/MC] - with soft copy only

NOBILI

1



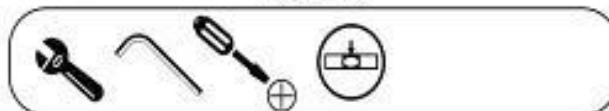
2



www.nobili.it

 Made in Italy

Not included



Self-opening every 24 hours for 30 seconds



EN 817
EN 15091



Battery operated : lithium mod.CRP-2 6V
① Faucet operation 110.000 cycles
② Faucet operation 220.000 cycles

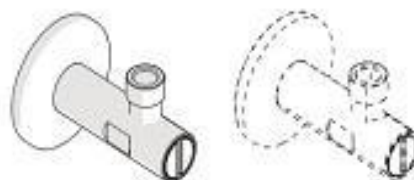
BATTERY INCLUDED



$T < 5^{\circ}\text{C}$



Do not expose the tap to temperatures lower than 5°C (for example during winter time); otherwise arrange on time for the drainage of the same from any water residual.



NOT INCLUDED



• Installer faucet with valve with inspectable FILTER must be made to ensure the water quality (including limescale) when installing this product; the presence of impurities may damage the solenoid valve.



ATTENTION : failure to faucet installation with **valve with inspectable FILTER** on the supply pipe can damage the solenoid valve and automatically invalidate the **warranty** of the product.



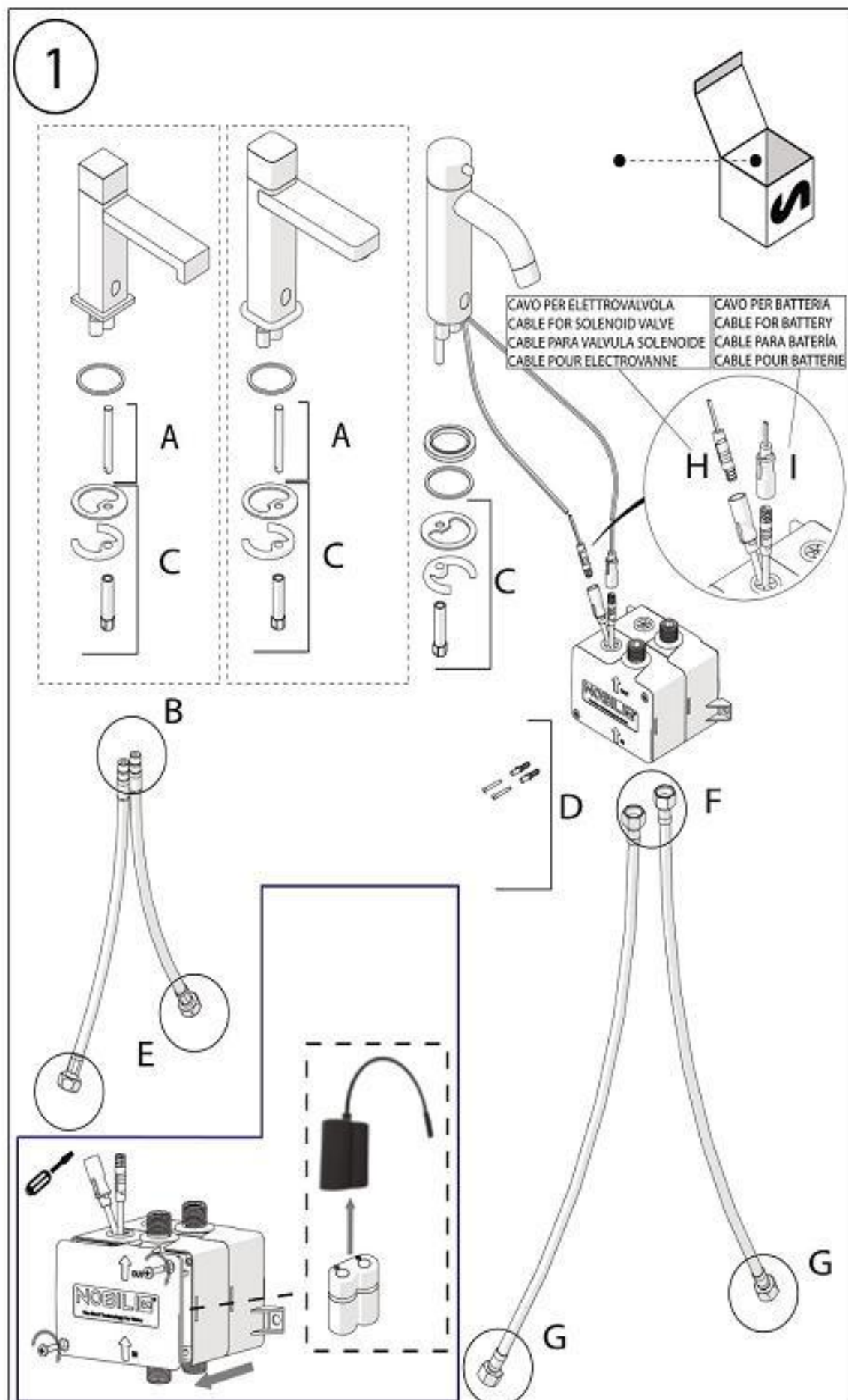
- In case of temporary closing of the plant, purge the up-streaming water supply, before reopening the plant.
- We suggest to install check valves on the water supply lines, to help eventual maintenance operations.

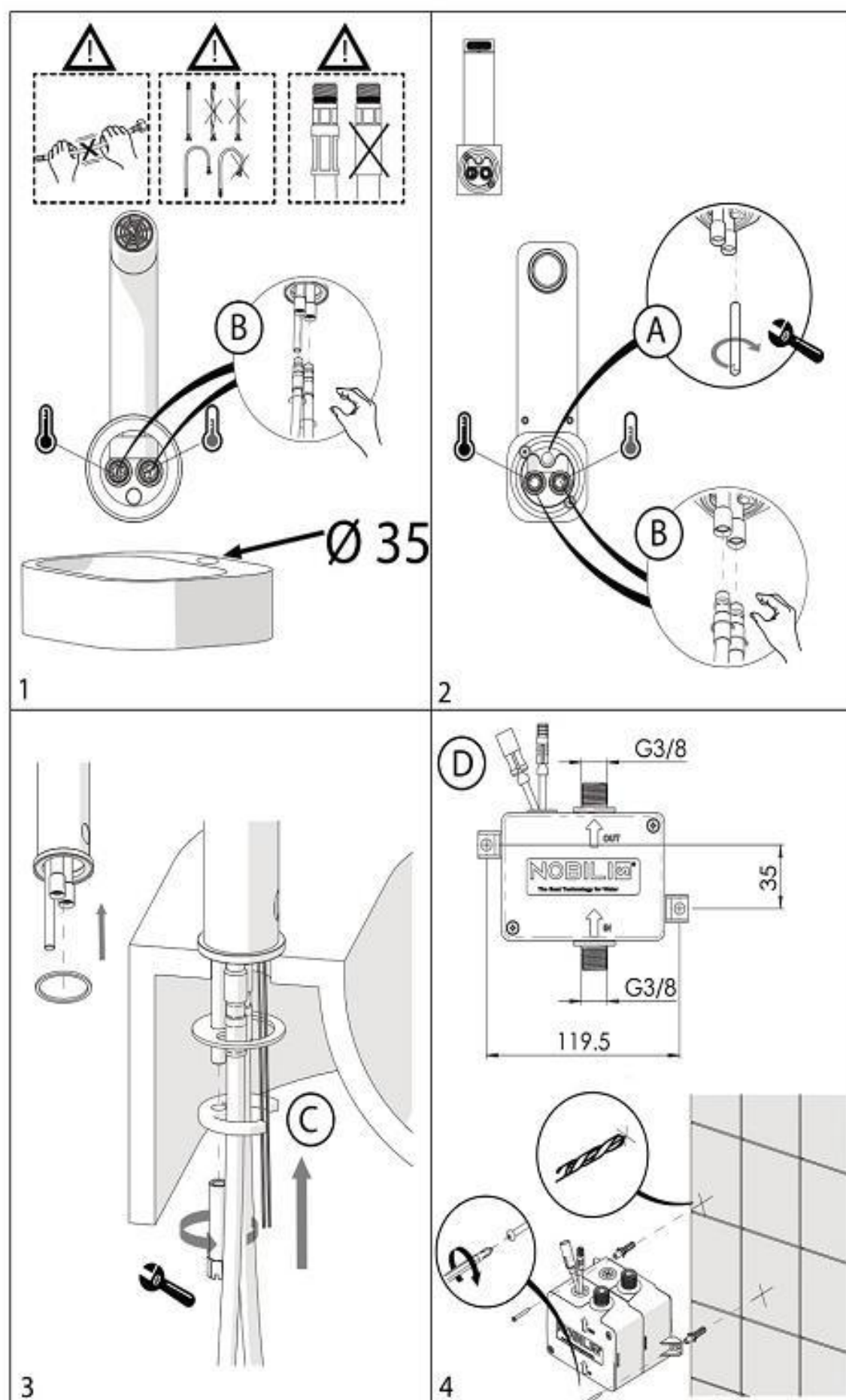
Recommended in case of forecast of plant stop for a period of time high (a few months) to purge dirty water.

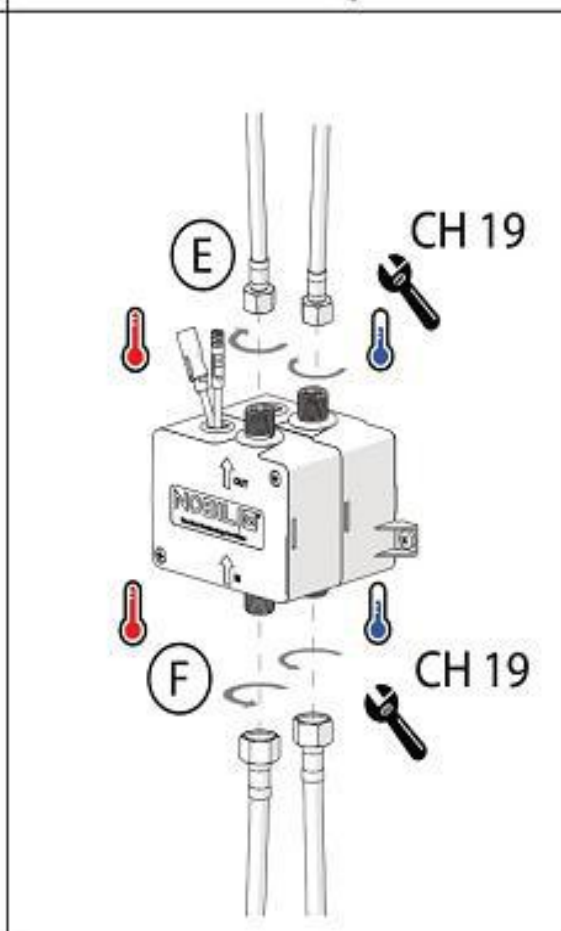
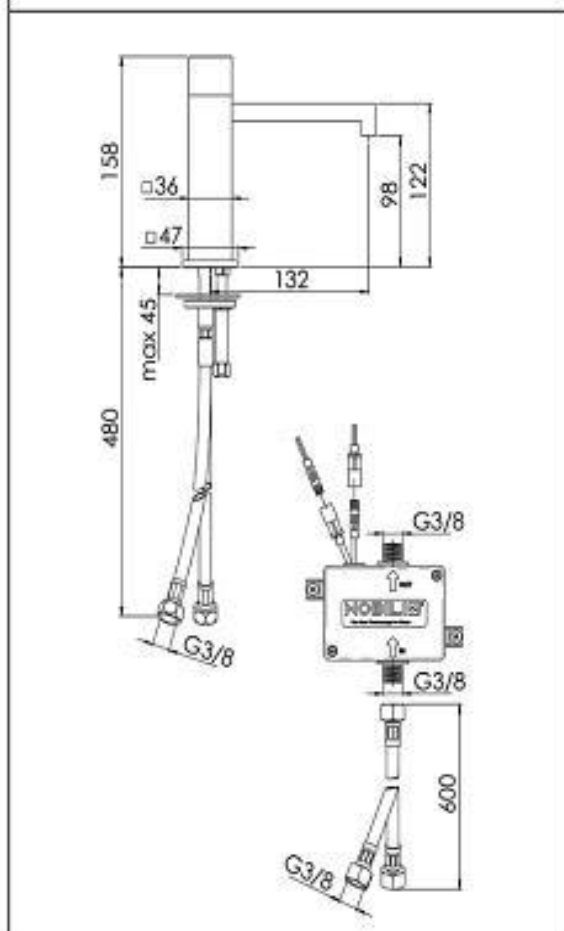
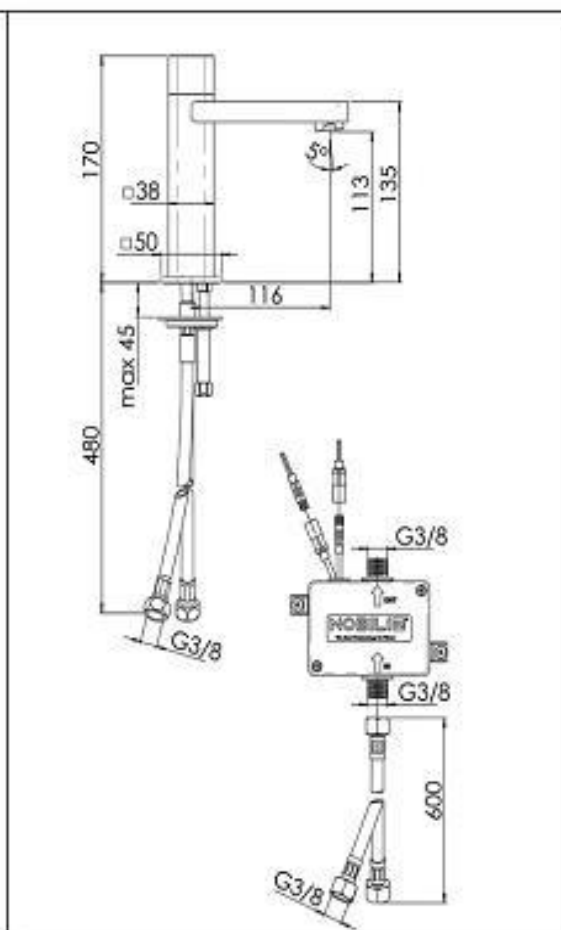
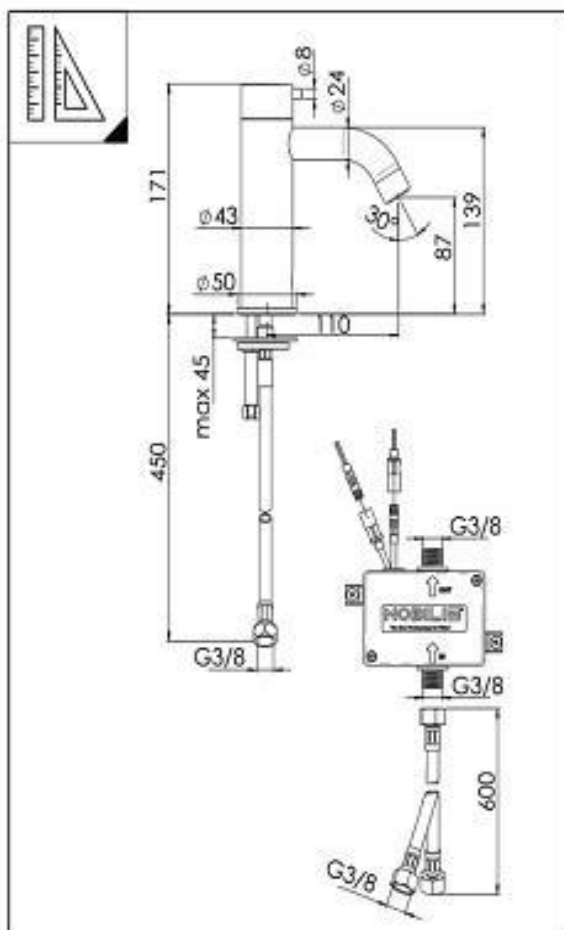


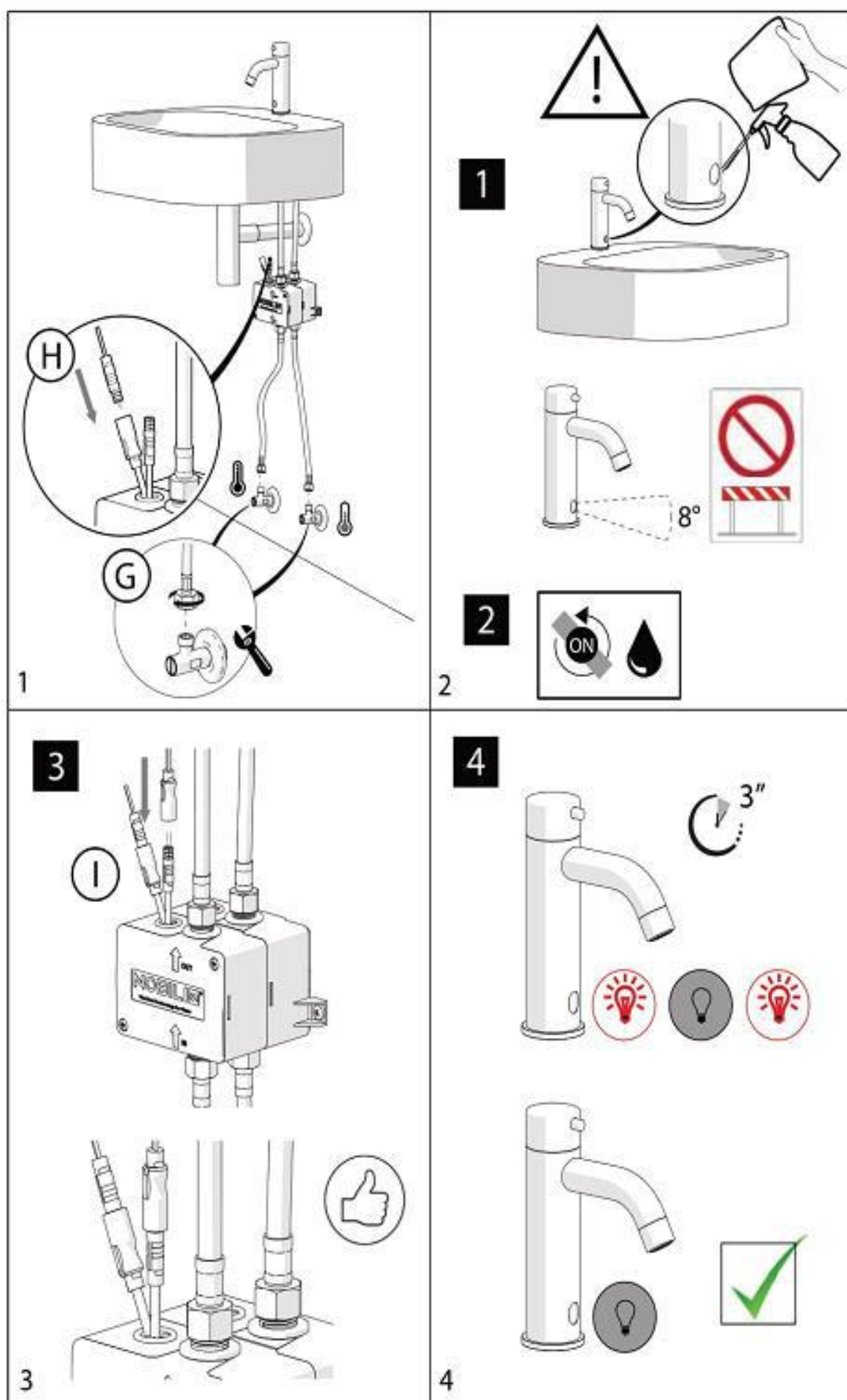
- In case of supply with pre-mixed water, we suggest the use of a thermostatic mixing valve.

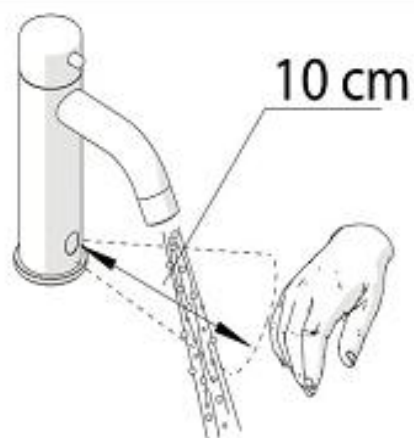
1



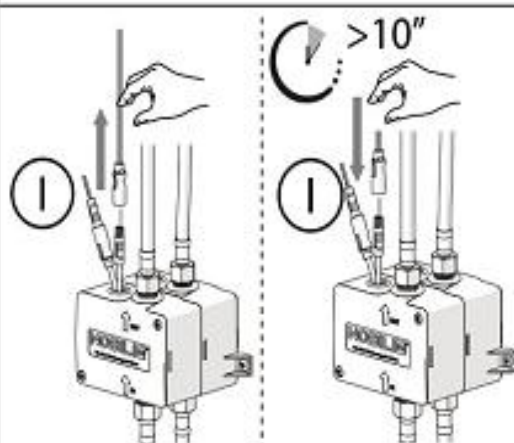
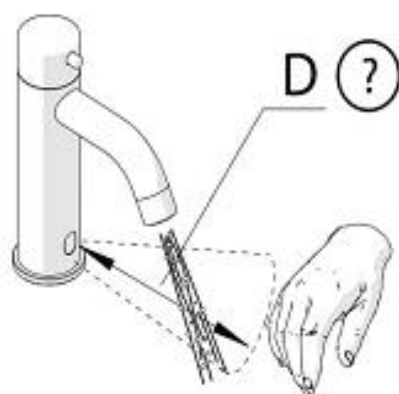








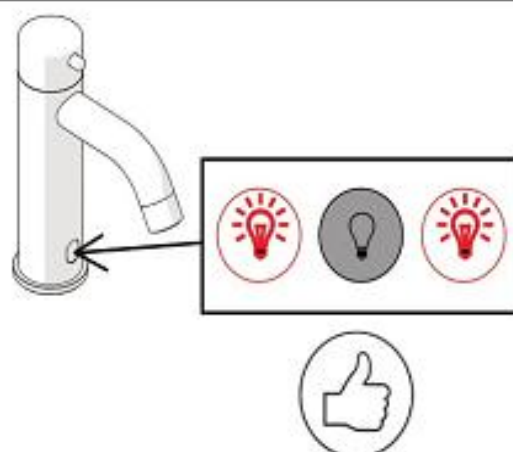
The distance to dispense water from the sensor is pre-set: 10 cm

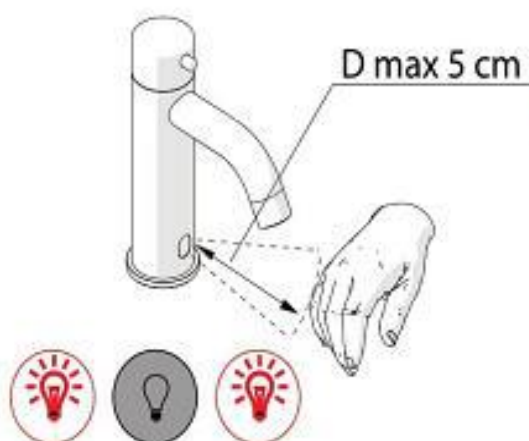


In case of anomalous functioning of the sensor
- unmotivated water flows
- delayed closures up to 1 minute

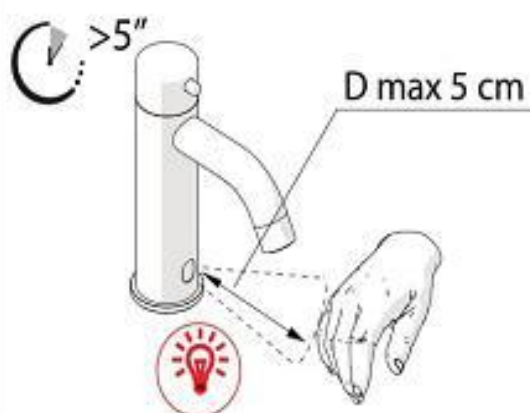
you can REGULATE the survey distance:

1. Unplug the connector of power supply (I);
2. Wait for 10 seconds and plug it again, the red led blinks ;

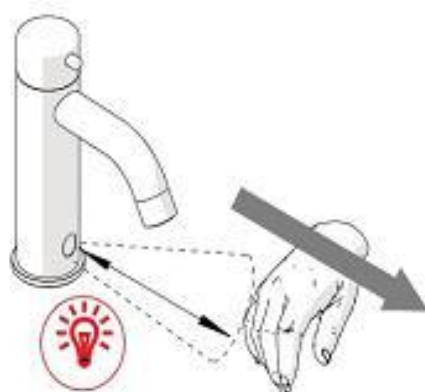


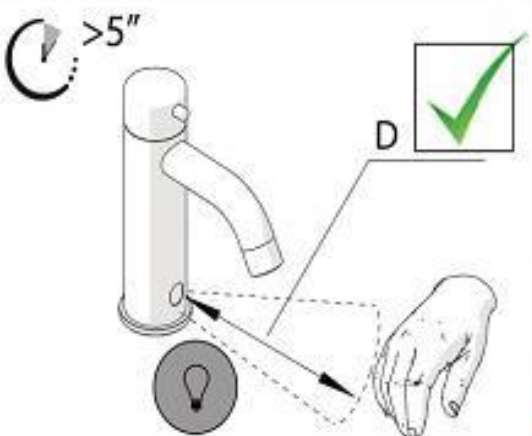
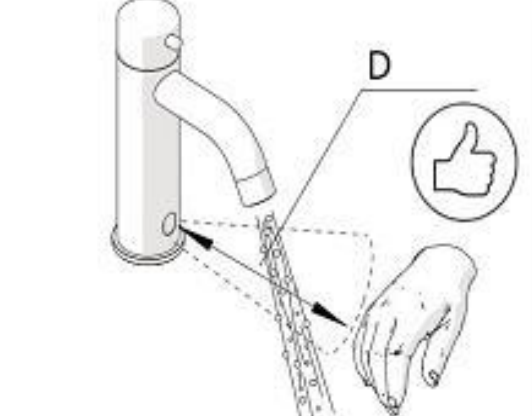

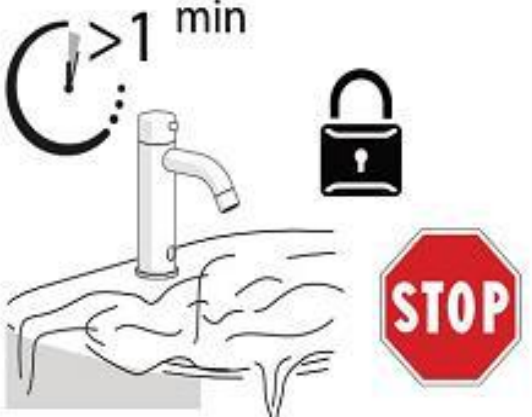


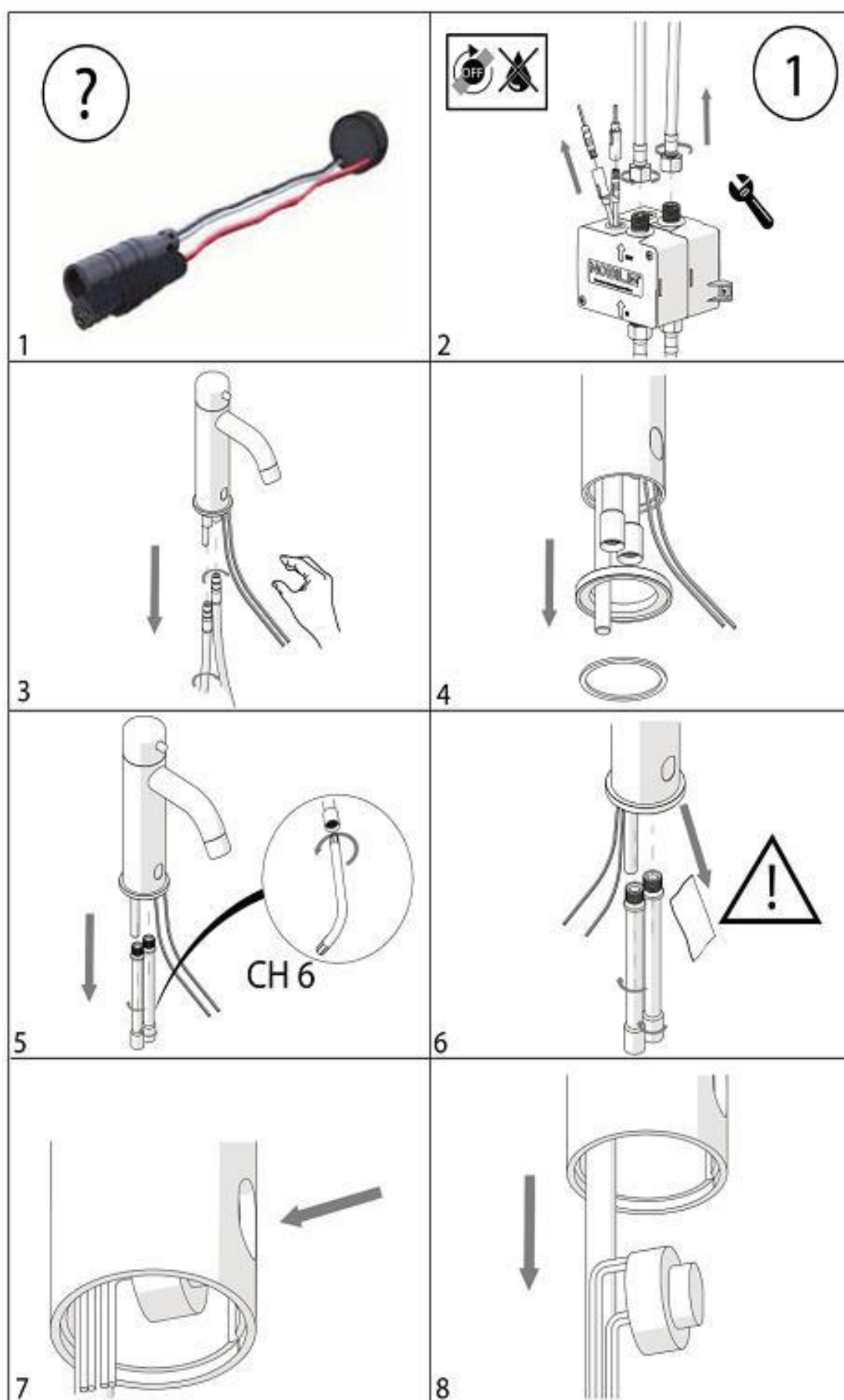
3. When the red led blinks (if it switches off, it is necessary to remove the power supply again and repeat the operation), put immediately one hand in front of the sensor (at a distance of max. 5 cm);

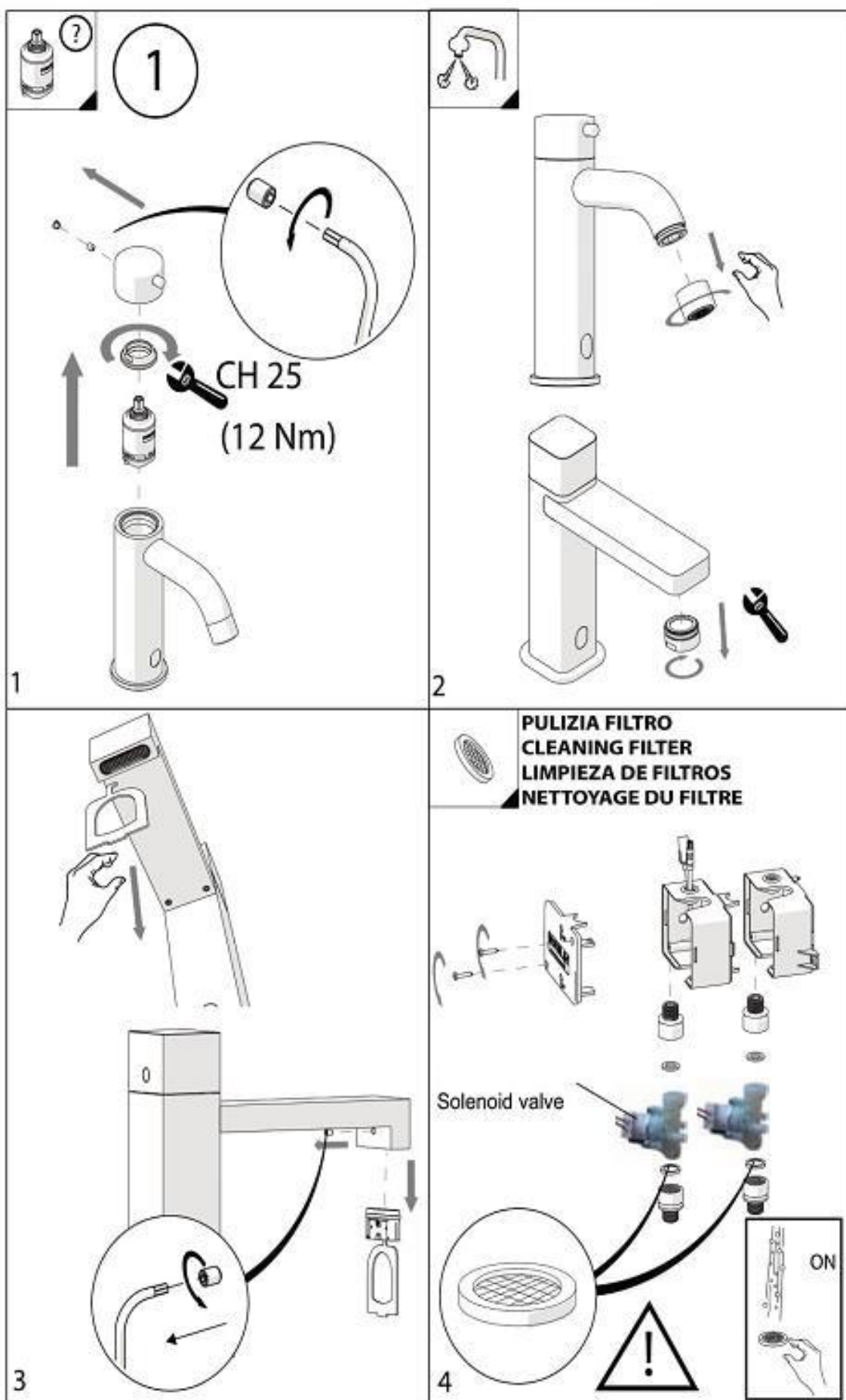


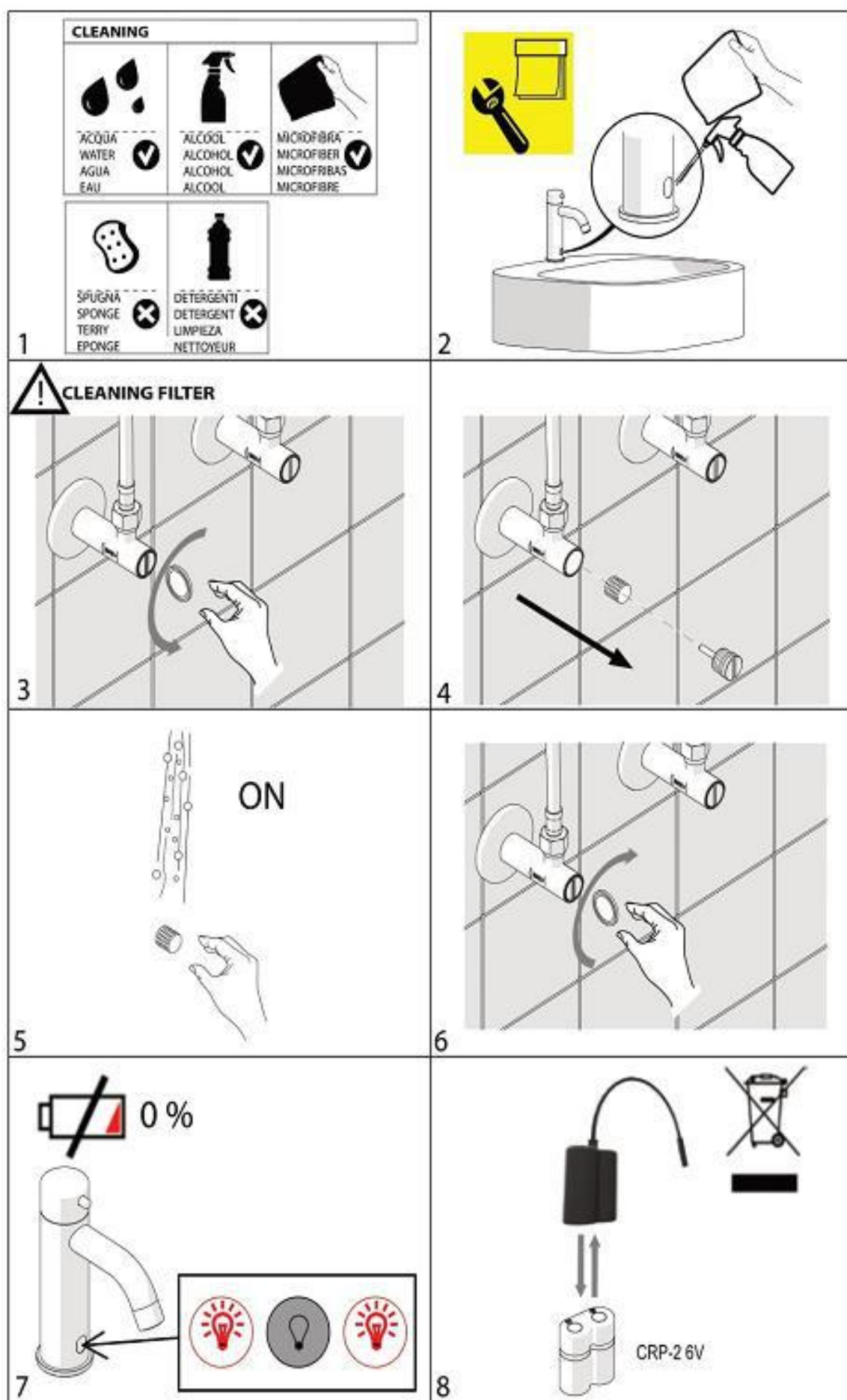
4. When the red led lights up permanently, place the hand at the desired distance;



	
	<p>5.Wait for the switching off of the led before taking out the hand; at this point the new distance is recorded.The new setting will be kept also in case of battery replaceme.</p>
	
	<p>To prevent flooding of locals following acts of vandalism or carelessness (an object left in front of devicethe sensor or dirty sensor),the tap has a safety that shuts off the water flow after about 1 minute. Once the object has been removed (or the sensor has been cleaned), the tap starts working again.</p>









DAMAGE



CAUSES



SOLUTIONS



1 2

No flow of water from tap



Exhausted battery (the led blinks)

Electrical problem

Filter is dirty

Blocked solenoid valve



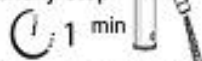
Replace the battery

- Disconnect and reconnect the battery
- Check the connections and the cable's integrity
- Damaged sensor: ask for

Clean the sensor window

Ask for

The water flows for 1 minute (without any object in front of sensor) finally stop



Dirty sensor

Light reflections on the sensor

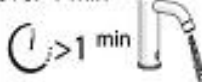
Electrical problem

Clean the sensor window

- Remove the reflection sources
- Adjust the survey distance

Disconnect and reconnect the battery (RESET)

The water remains open over 1 min



Blocked solenoid valve / damage sensor

Ask for

The faucet opens / closes independently with no reason

It's been 24 hours since the last one supply

Light reflections on the sensor

Correct operation

- Remove the reflection sources
- Adjust the survey distance

1

Water between handle and body

It flows only hot or cold water

Out-let flow reduced

- Cartridge blocked

Blocked solenoid valve

- Insufficient working pressure
- Cartridge blocked or dirty
- Outlet obstructed by dirt or limestone
- Filters in-lets obstructed by dirt and limestone

- Replace cartridge

Ask for

- Pressure check
- Replace cartridge
- Disassemble and clean aerator
- Disassemble and clean filters

Non-appropriate temperature regulation

- Cartridge blocked or dirty
- Hot water temperature insufficient

- Replace cartridge
- Check the system

Only hot or cold water flows, regardless of the handle selected

Water in-lets inverted

Invert water in-lets



WARRANTY







The warranty does not cover damages caused by:

- Deterioration of the chrome surfaces due to the use of cleaning products containing acids or abrasive substances
 - incorrect installation
 - negligence maintenance and use
 - acts of vandalism
 - contact with abrasive or corrosive chemicals
- caused the presence of any dissolved compound in the supply water (limestone, strange compounds, acids, ect.).

SPARE PARTS CONSULT THE SITE

www.nobili.it



	   Do not dispose of with unsorted waste but collect separately. Proper disposal and recycling of WEEE means reducing risks to the environment and to human health. For further information contact your dealer.
--	---

